



# INTRODUCTION

De Montfort University is committed to addressing sustainability across all its operations and activities. The University strives to embed sustainability into all forms of teaching and learning, how we manage and run our campus and also how we engage with our local and international partners.

Sustainability and the Sustainable Development Goals (SDGs) has been identified as a key cross-cutting theme in the University's Empowering University strategy which sets the strategic direction for the institution over the next few years.

DMU is also a global hub for SDG16 Peace, Justice and Strong Institutions and is the only UK university to receive this accolade.

Universities have a special role and responsibility to play in delivering sustainability. Not only are universities large employers with considerable stakeholders and as institutions which can develop real world solutions to global challenges through their research.

DMU is committed to making progress in addressing sustainability in all its activities and operations. The institution is committed to publicly reporting its work and progress in this important area.

This sustainability report for 2022/23 highlights our progress against our sustainability targets and the progress that we have made in many areas of our work throughout the year.

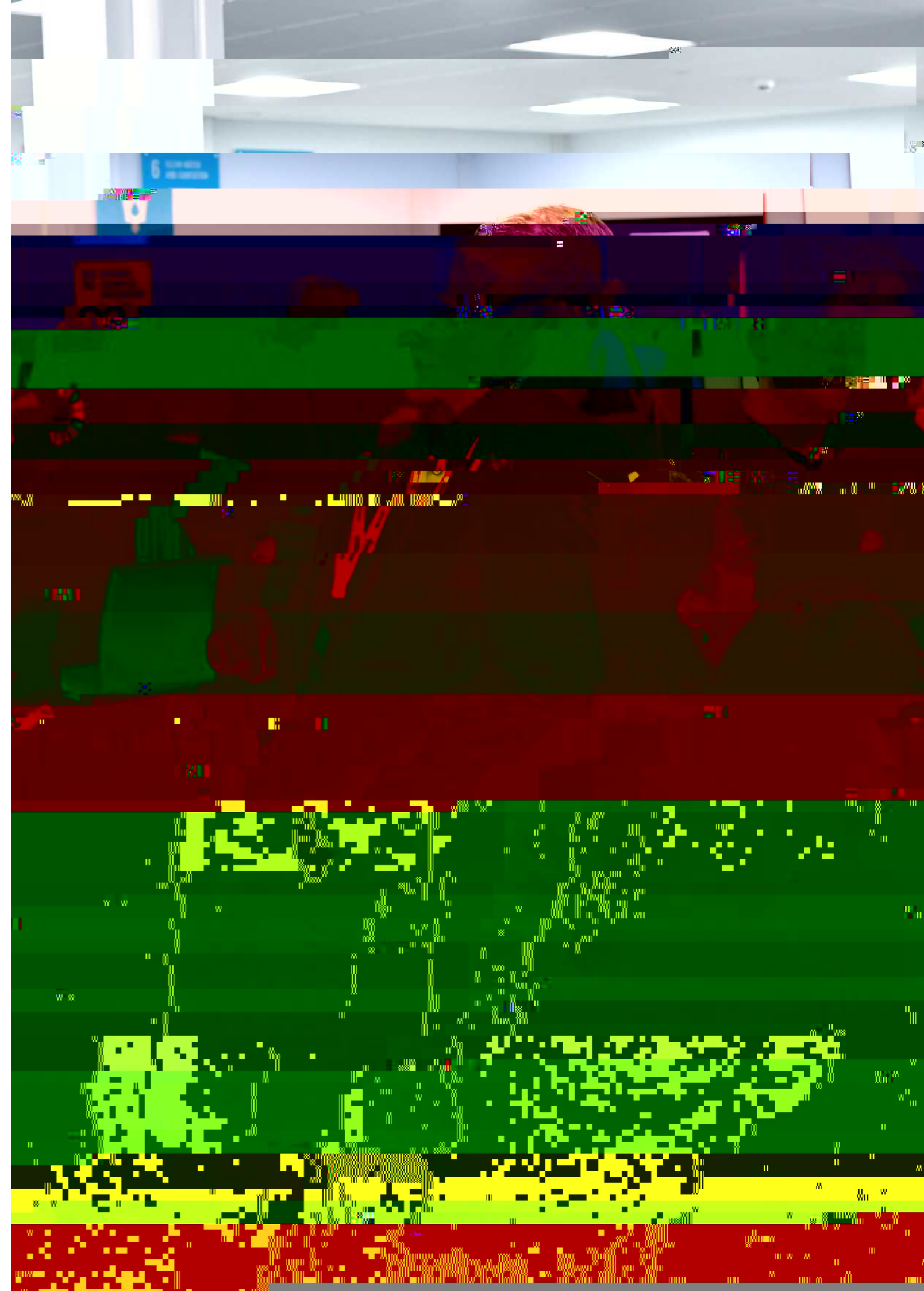
The publication of this annual report provides an opportunity for staff, students and other stakeholders to assess our sustainability performance. This is a key element of our environmental management system and sustainability reporting. As well as reporting progress against our key objectives and targets within this document we also publish the data to support our progress on sustainability.

We welcome feedback from our staff and students on this report and on areas where we can improve our sustainability performance.

# THE SUSTAINABLE DEVELOPMENT

De Montfort University is committed to supporting the United Nations' Sustainable Development Goals (SDGs), or Global Goals, to ensure all people enjoy peace and prosperity while protecting our planet from global threats such as climate change. The 17 SDGs aim to improve a broad range of ecological and humanitarian issues including poverty, hunger, health, education, climate change and social justice by 2030.

The SDGs were agreed by all nations of the UN, both developing and developed, as an urgent call for action to address many of the global issues that





Deliver at least one project per year to change staff environmental behaviour to 2023





## ENVIRONMENTAL MANAGEMENT

DMU has an Environmental Management System (EMS) to manage its environmental impacts. An EMS is a set of processes and practices that enable an organisation to manage and reduce its environmental impacts, increase its operating efficiencies, and ensure it meets its legal obligations. Our EMS is assessed annually by external auditors against the requirements of the British Standard (BS8555) for environmental management systems.

This annual sustainability report is a key part of the EMS in terms of publicly reporting progress in meeting our sustainability objectives and targets.

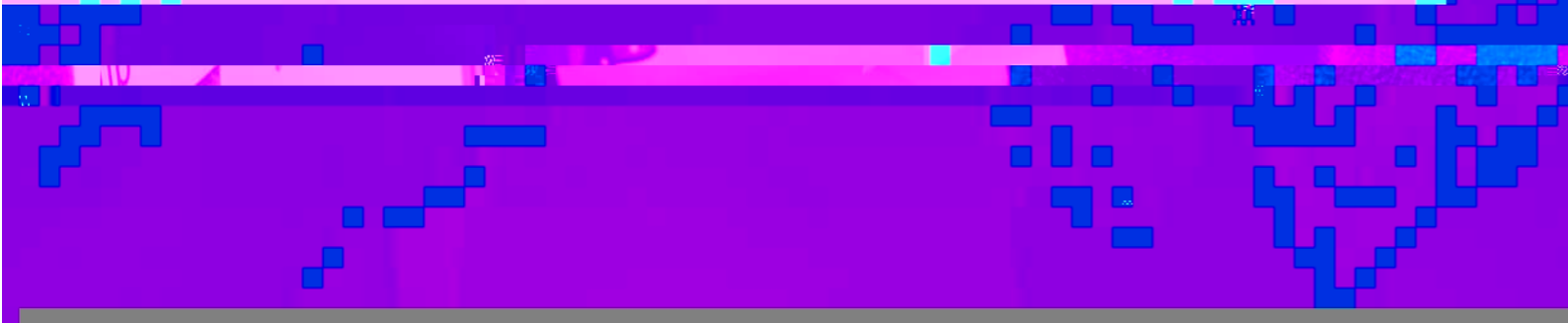
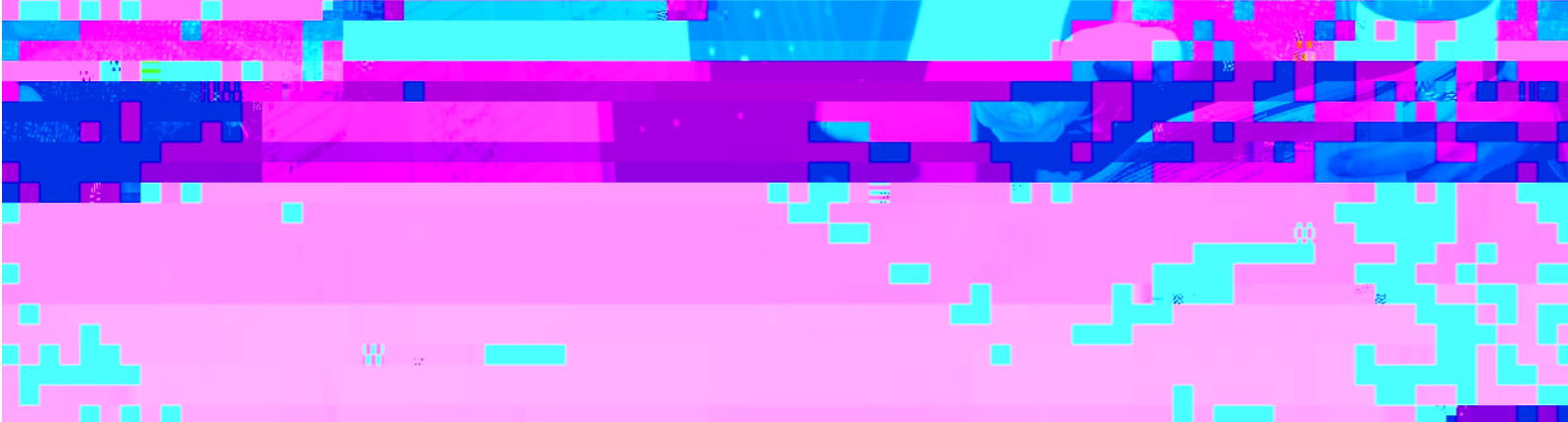
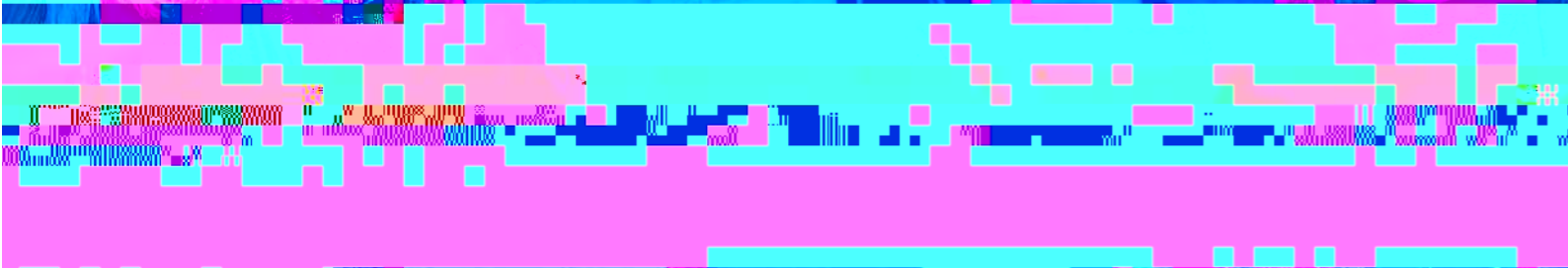
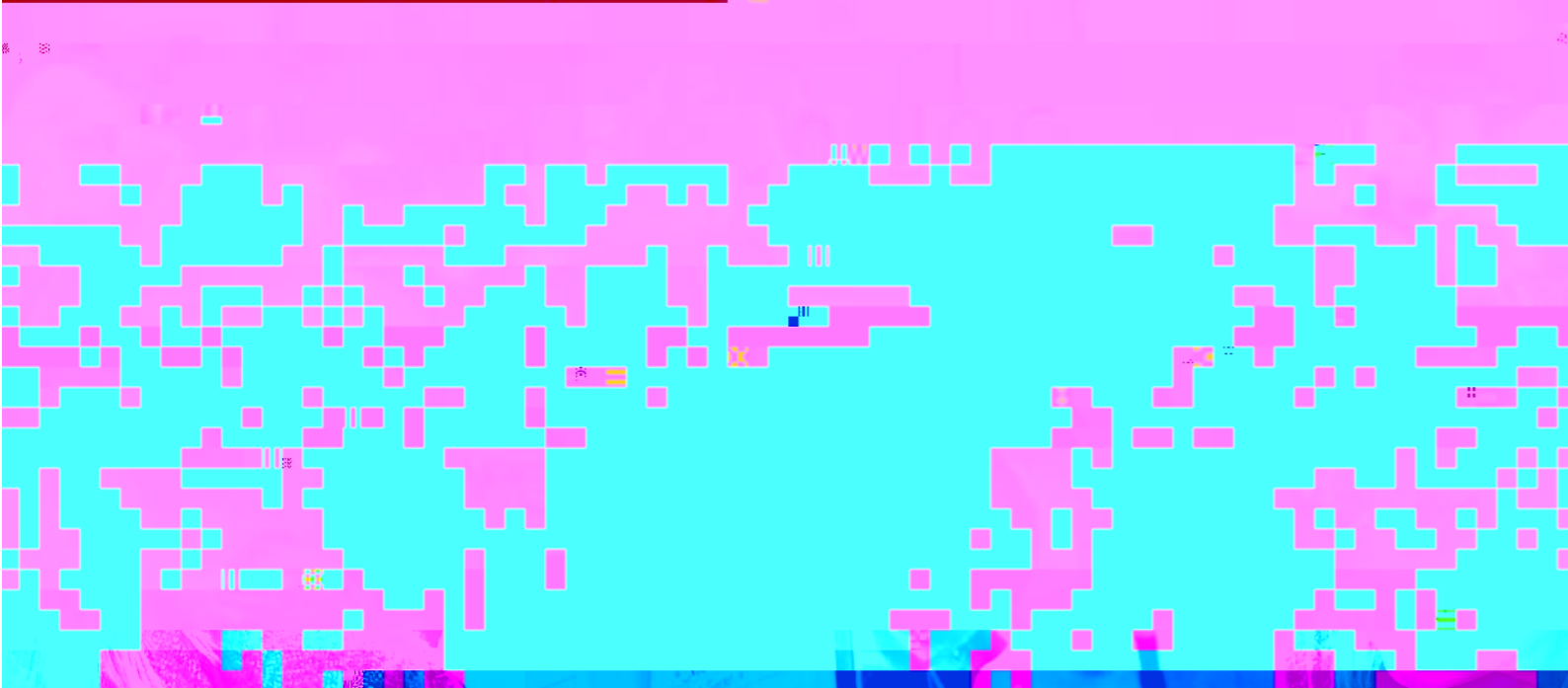
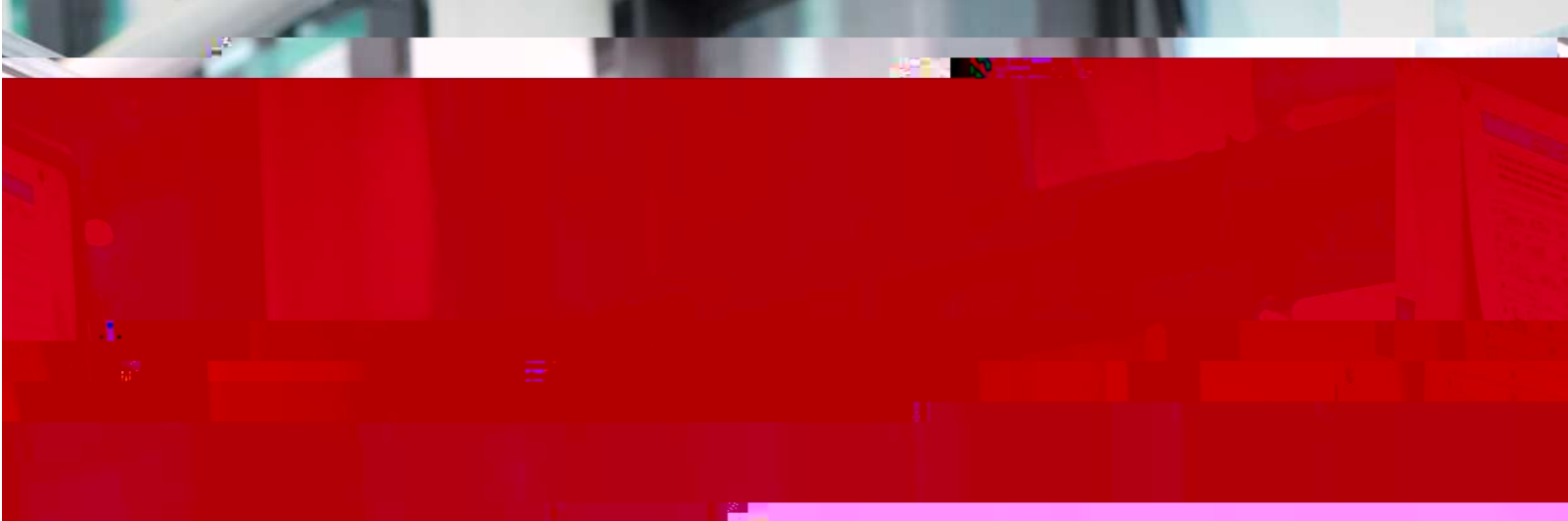
## BRITISH STANDARD BS8555 PHASES

### Phase

- 1 Commitment and establishing the baseline – Achieved
- 2 Identifying and ensuring compliance with legal and other requirements – Achieved
- 3 Developing objectives, targets and programmes – Achieved
- 4 Operation and implementation of the EMS – Achieved
- 5 Checking, environmental audits and reviews – In progress
- 6 Transition to international EMS standard ISO14001:2015 – Not started







8A I 'hcc\_dUfh]b'h.Y'G8; 'HYUW'èk \]W]gU'WadU]] b'è'di h'h.Y'

# TRAVEL

When DMU Placement Student, Daria Brazhnyk, joined the Sustainability Team,

gY\UX'bj Yf fXXyb'UV\Y'VYZcfY'Vi hXYW'XYX'hc'YUfb'Ug'U'g'g'U'p'UVY'

k0570003009.8e. <</Lang (en-GB)/MCD 33 BDC BT/TT11675781 c.9e 18 4.9



# ENERGY AND WATER

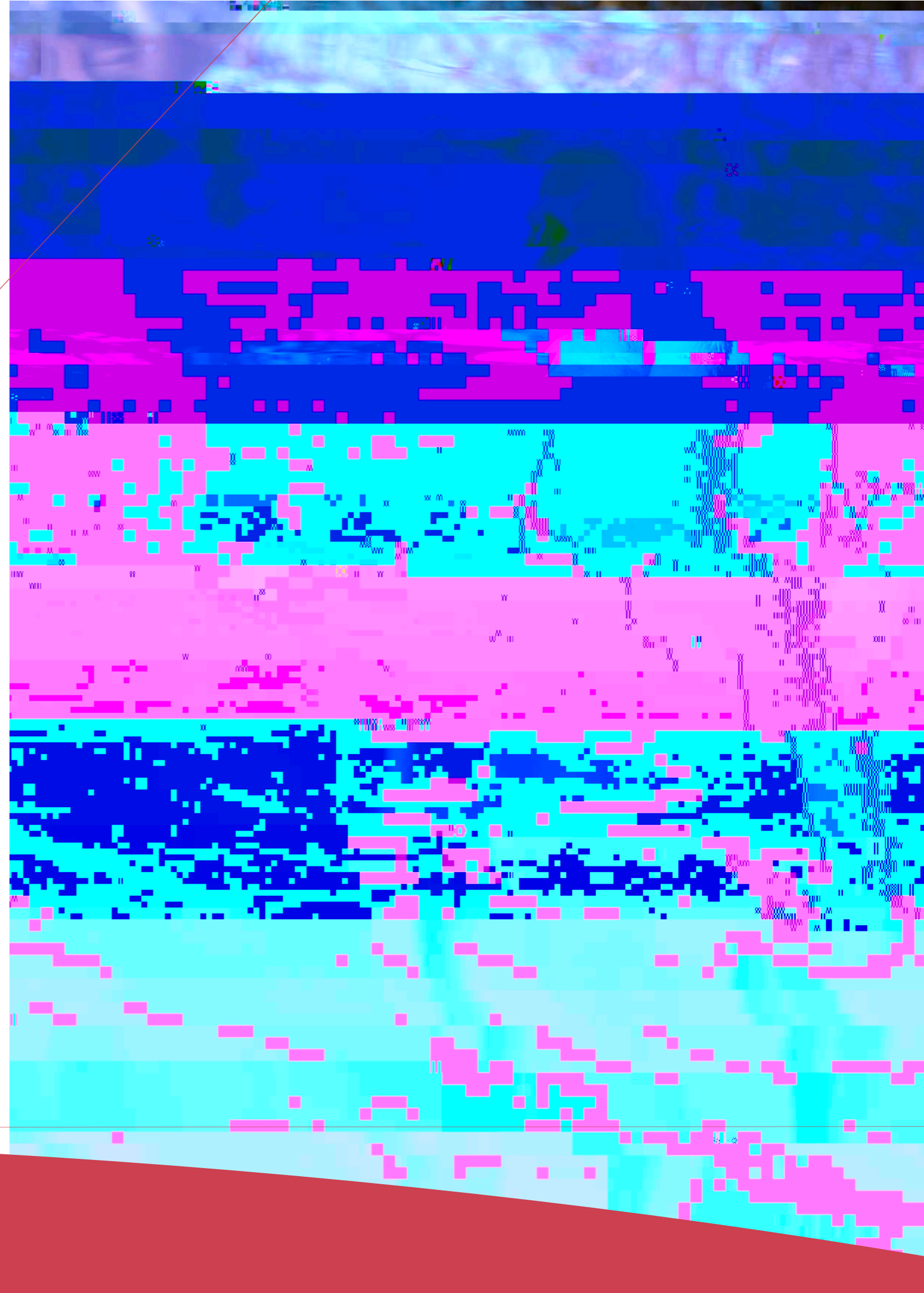
Our campus requires energy for lighting, heating and equipment use. Our energy use has an impact through the means to generate the energy we need, as well as through the carbon emissions which are released when these fuels are burned.

Our energy use for 2022/23 was 27,363 MWh. Energy use has decreased this reporting year when compared to the previous year. Electricity use accounted for 18,100 MWh, which is 66% of total energy use and has returned to pre-pandemic levels.

Our energy use is primarily generated from nuclear power. Targets in relation to energy use are reported in our Sustainability Report and are based on the following assumptions: 100% of energy use is generated from nuclear power.

Our water consumption for 2022/23 was 3,766 m<sup>3</sup>, which is a 10% reduction on the three-year average from 2012 to 2020. This reduction is due to a combination of factors, including the impact of the COVID-19 pandemic on campus occupancy and the implementation of water-saving measures.

A 10% reduction in water consumption over the three-year average from 2012 to 2020, based on a three-year average of 4,200 m<sup>3</sup> per year.

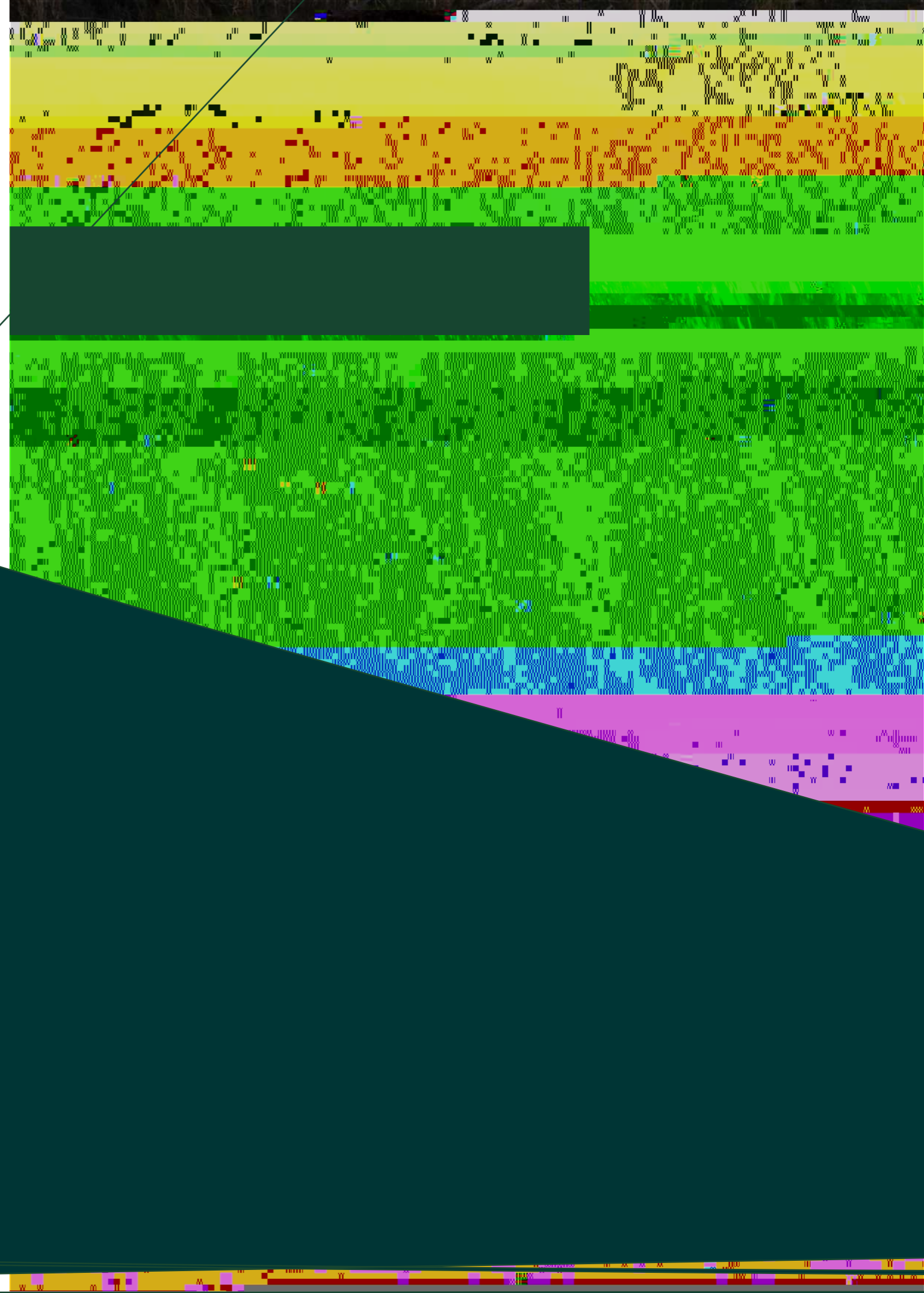


# WASTE AND RECYCLING

Carbon emissions from energy use and emissions from DMU owned vehicles in 2022/23 were 5,317 tCO<sub>2</sub>e. This is a 10% increase on the 2015/16 reporting year of 2005/06.

The Carbon Plan contains a range of different projects to improve light and energy efficiency as well as improving the insulation of buildings. The Carbon Plan also includes a range of other projects to reduce emissions from DMU owned vehicles.

The Carbon Plan also includes a range of other projects to reduce emissions from DMU owned vehicles. The Carbon Plan also includes a range of other projects to reduce emissions from DMU owned vehicles.





## INTERNATIONAL AND UK STUDENT TRAVEL EMISSIONS

The University aims to take a comprehensive approach to measuring and reporting its carbon emissions. This includes the impact of students travelling to DMU to study including both UK students and international students.

Emissions from international students in 2022/23 were considerably



# SUS

The Unive  
ensure tha  
This include  
raising of th

assessment th  
; ccX'gubXUf  
g'gubUV]mW  
awarded to resta  
set of 10 criteria fo

Through the assessment  
gufgubX'gubYX'U'rchU  
campus for a staff and stud  
to a new location on campus  
The new home for the allotment  
allotment is open to staff and stud

DMU and Chartwells achieved two starts in the Food Made Good sustainability assessment



# ETHICAL INVESTMENT

DMU has adopted an ethical investment policy which is reviewed on a regular basis. The ethical investment policy is part of the institutions Investment Policy. DMU works with its ethical fund managers to manage its investments in a socially responsible manner.

DMU will not invest in:

DMU will not invest directly or indirectly in producers of high impact fossil fuels (thermal coal, oil sands, shale oil and shale gas) and a nuclear weapons and will not invest directly and reasonably minimise indirect investments in:

- tobacco manufacturers
- adult entertainment
- alcohol
- gambling

Ensuring that new buildings and refurbishments embrace sustainability principles can reduce the energy demand of buildings thereby reducing energy related carbon emissions

DMU's Energy Policy, which includes the use of various assessment protocols depending on the size and budget of the refurbishment or new build project.

*The Energy Policy states that:*

'DMU aspires to create sustainable buildings and during any new build, DMU will consider industry recognised sustainability standards such as BREEAM and SKA HE.

DMU's Director of Estates and Facilities will consider alternative assessment methodologies / standards such as PassivHaus, LEED or the WELL Building standard may be adopted by Estates and Facilities for a project subject to the prior agreement of the Director of Estates and Facilities.

DMU will continue to work with its fund managers to ensure that its investments are in line with its ethical investment policy.



# OUR ROLE IN THE COMMUNITY

Engagement at DMU provides support through a range of initiatives that make a positive impact. Our projects are delivered through student learning and experience, through research and engagement and through supporting projects collaboratively within DMU, the local community and beyond.

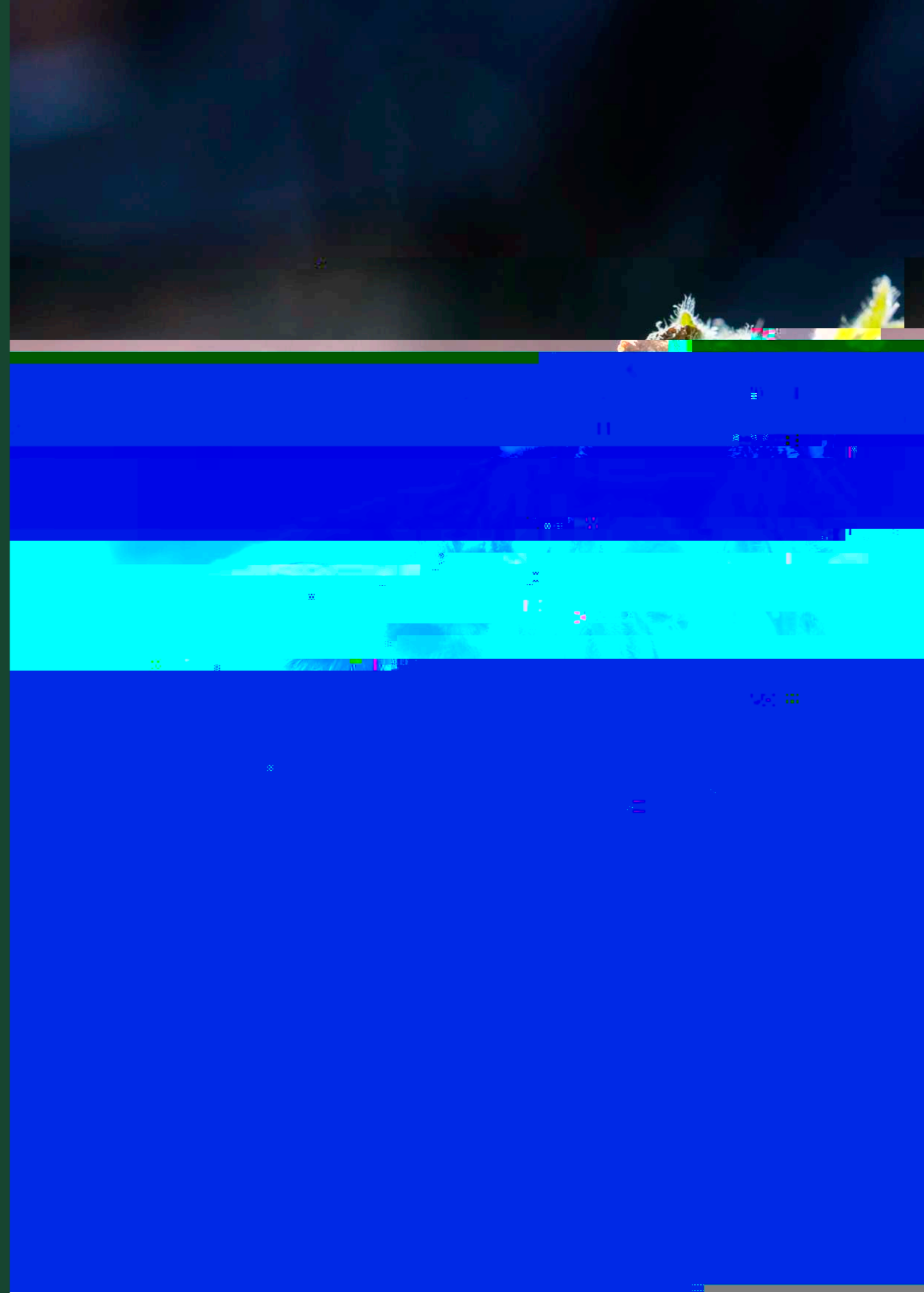
We focus on social challenges that affect our local communities and provide clean-up, supporting food banks or connecting your research with the community, we can match you to the right opportunity, helping you to develop your skills and gain valuable experience and insight.

We are also looking to increase the ways our students can learn and share their knowledge and skills. Through applied learning, we can help to embed practical learning into your modules and support student attainment.

We work with a range of partners. We run two rounds of funding every academic year, with applications opening in August and October. We can award grants to support your research and engagement activities.

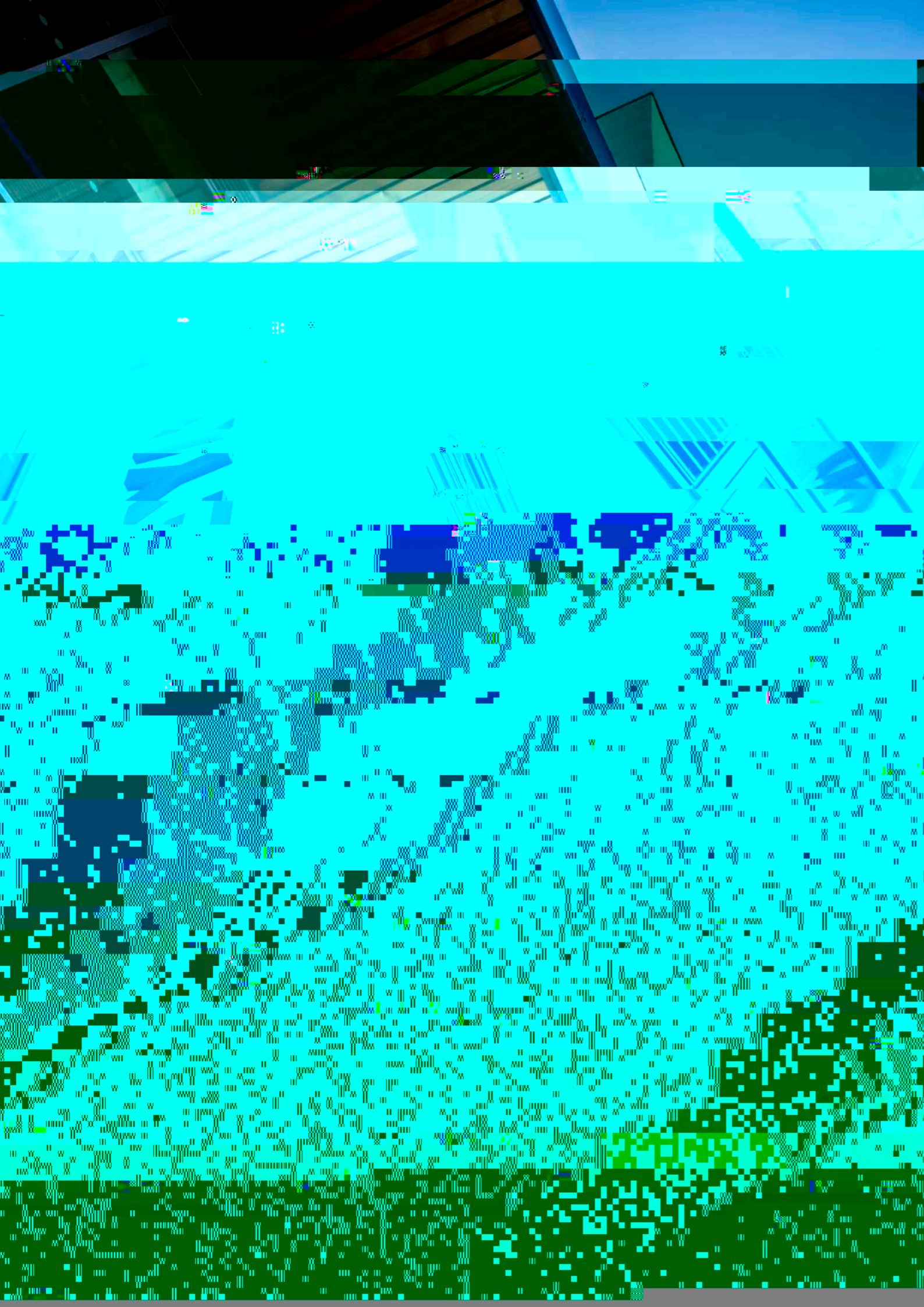
The DMU campus is a city centre campus which presents many challenges for biodiversity, however there are still many opportunities to enhance biodiversity on the site.

Through the work of the Estates and Facilities Grounds Maintenance









# TRENDS AND FUTURE AREAS OF

Overall, the picture in relation to our sustainability performance is very good.



For more information about environmental and sustainability benchmarking at DMU please contact Karl Letten, Sustainability Manager:

T: (0116) 207 8746

E: [kletten@dmu.ac.uk](mailto:kletten@dmu.ac.uk)

W [dmu.ac.uk/sustainability](http://dmu.ac.uk/sustainability)

Estates and Facilities Directorate  
De Montfort University  
The Gateway  
Leicester LE1 9BH